

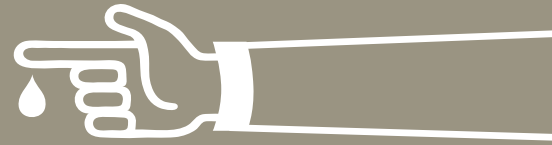


GRAND RAPIDS

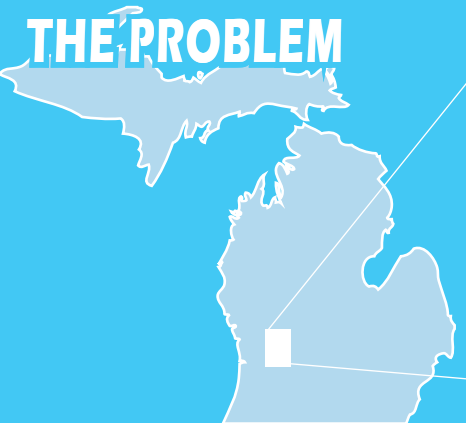
African American Health Institute

ECONOMIC IMPACT OF

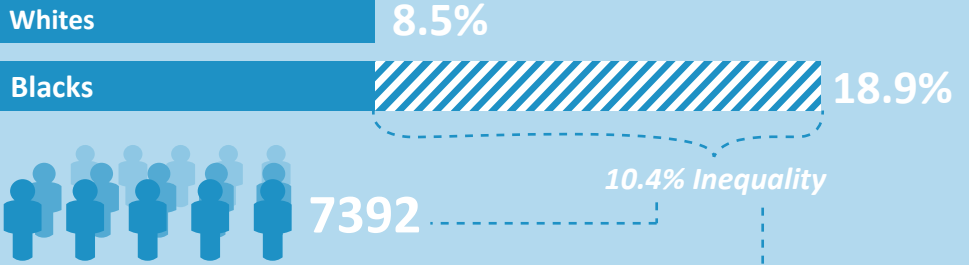
DIABETES *in Kent County, Michigan*



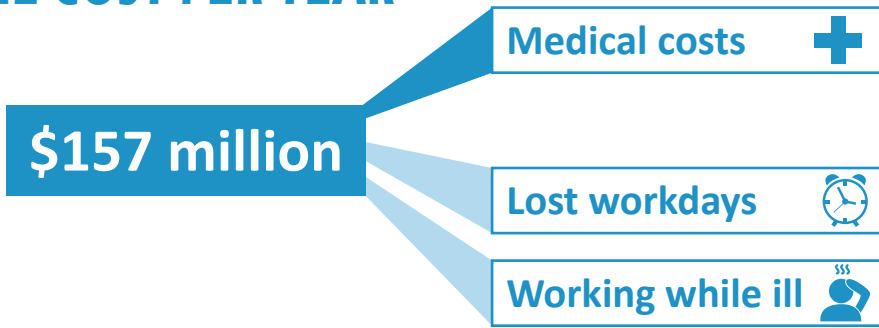
THE PROBLEM



Kent County Incidence Rates



THE COST PER YEAR



Eliminating inequality will save Kent County



CALL TO ACTION

Sedentary lifestyle, poor nutrition, and smoking all contribute to diabetes.



For every **\$1** spent on community-based programs that focus on improving physical activity, nutrition, and smoking prevention, **\$5.60** is returned to the community.

